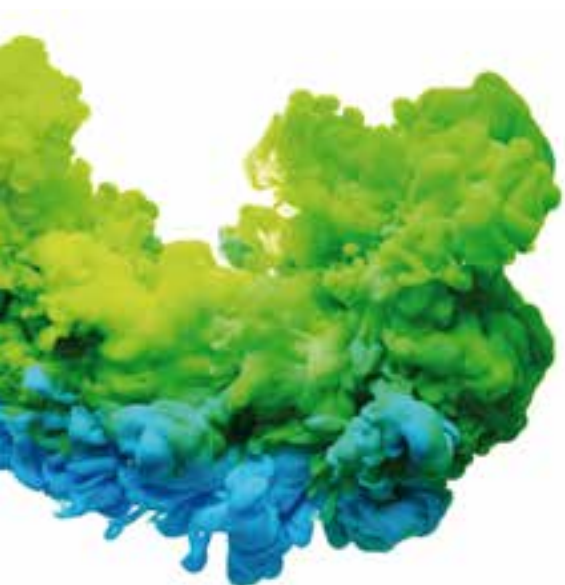


Masini de spalat  
cu bariera igenica





## Power, control and total disinfection

The strict sanitary rules RABC require powerful machines with specific washing processes for hospitals, care homes, pharmaceutical, nuclear and cosmetic industries, etc.

DOMUS new range of barrier washers outstand for its advanced technology, ergonomics and safety features. With capacities from 16 to 100 kg; they are perfect to adapt to the needs of this very specific and demanding market. Installed between two separate areas, avoids any contact between dirty (infectious) linen and clean linen, as well as any type of re-contamination during the process. At the same time, its ergonomic design allows to work in an efficient way, which increases production in a high percentage.

We distinguish between three ranges of DOMUS barrier washers, organised by features and capacities. The two smallest models are 16 and 22 kg, with the new TOUCH II microprocessor with a 4,3" touch screen and a second display as option on the clean side of the machine.

The middle range has capacities 27, 35, 50 and 70 kg. It is a completely new range, also with the new TOUCH II a 7" touch screen, the second display as standard, huge loading doors and many other outstanding features. The last is the biggest model, a 100 kg pulman type barrier machine, also with TOUCH II microprocessor and new features.

## ECOVOLUTION by DOMUS



### BARRIER WASHERS | ASM

CONTROL TYPE	HEATING	CAPACITY	
		16 kg	22 kg
TOUCH II Programmable Control	Electric, steam and dual (electric + steam)	ASM-16 TOUCH II	ASM-22 TOUCH II



### MEDICAL BARRIER WASHERS | DHB

CONTROL TYPE	HEATING	CAPACITY			
		27 kg	35 kg	50 kg	70 kg
TOUCH II Programmable Control	Electric, steam and dual (electric + steam)	DHB-27 TOUCH II	DHB-35 TOUCH II	DHB-50 TOUCH II	DHB-70 TOUCH II



### BARRIER WASHERS | PULLMAN

CONTROL TYPE	HEATING	CAPACITY
		100 kg
TOUCH II Programmable Control	Electric, vapor	ASA-100 TOUCH II PULLMAN



## HIGH SPIN



## HIGH SPIN



## HIGH SPIN



## ASM

- ✔ Pass-through barrier washer extractors with 2 opposed doors (180°) with sanitary separating frame.
- ✔ Models of 16 and 22 kg.
- ✔ G Factor 350.
- ✔ TOUCH II Microprocessor with a 4,3" touch screen.
- ✔ Two water inlets.
- ✔ Outer casing in skinplate, top stainless steel.
- ✔ Central drain.
- ✔ Automatic positioning of drum.
- ✔ Heating: electric, steam.
- ✔ New model dual heating (electric + steam).



## DHB

- ✔ Pass-through barrier washers, with 2 opposed doors (180°), soft mounted.
- ✔ Models of 27, 35, 50 and 70 kg. G Factor 375.
- ✔ TOUCH II Microprocessor with a 7" touch screen.
- ✔ Double display standard.
- ✔ Panels in grey skinplate and top panel in stainless steel.
- ✔ Drum and vat in stainless steel AISI 304.
- ✔ Three water inlets.
- ✔ Central drain.
- ✔ Automatic positioning of drum, with motor brake standard.
- ✔ Heating: electric, steam.
- ✔ New model dual heating (electric + steam).



## PULLMAN

- ✔ Pass-through barrier washer - Pullman partition, soft mounted.
- ✔ 100 kg. model. G Factor 325.
- ✔ TOUCH II Microprocessor with a 7" touch screen.
- ✔ Double display standard.
- ✔ Three water inlets.
- ✔ External panels in skinplate and top in stainless steel.
- ✔ Drum and vat in stainless steel AISI 304.
- ✔ Central drain.
- ✔ Automatic positioning of drum, with motor brake standard.
- ✔ Heating: electric, steam.
- ✔ Dual heating as option (electric + steam).

# ECOENERGY



## TOUCH II

- ✓ User friendly and totally programmable microprocessor with a 7" **touch screen (4'3" en ASM models)**
- ✓ **Traceability as standard**
- ✓ **8 dosing signals as standard**
- ✓ **Screen on both sides of the machine**  
Touch screen on the dirty side and only display on the clean side to show the status of the washing program (option for ASM range of 16 and 22 kg)
- ✓ **USB Connection.** PC software free of charge for programming, traceability, data analysis...
- ✓ **Remote communication ready**
- ✓ Customisation of programs according to each need
- ✓ **Wet Cleaning**
- ✓ **Options:**
  - WIFI connection
  - Printer
  - 6 extra dosing signals



## ERGONOMICS

- ✓ **Huge doors** opening making loading and unloading operations easier, biggest openings in the market
- ✓ **User friendly drum opening by push button**
- ✓ Ergonomic height for an easier loading of the linen
- ✓ **Options:**
  - Plinths to align loading height - door base at 850 mm



## OUTSTANDING FEATURES

- ✓ **Double display** (as option in ASM models)
- ✓ **Automatic positioning of drum with motor brake** to make easier loading and unloading operations (as option in ASM models)
- ✓ **3 water inlets as standard**  
(2 water inlets in ASM range)
- ✓ **WET CLEANING:** equipped with all features to use WET cleaning programs (useful in nursinghomes)
- ✓ Skinplate outer casing and top panel in stainless steel, **easy to clean**
- ✓ **New dual heating electric-steam model - energy savings**
- ✓ **Options:**
  - Detergent box kit (instead of pumps)
  - Second drain valve for water recovery
  - Titration valve
  - UPS kit to release drum brake in case of power failure
  - AISI 304 stainless steel outer casing. (standard in ASA-100)



## CONNECTIVITY

- ✓ **Remote technical service:** machine monitoring, error warning, remote desk and data recovery for technicians and maintenance, software updates.
- ✓ **Management of laundries**
- ✓ **Options:**
  - Domus Connect: communication module.



## EFFICIENCY

- ✓ **Water savings**  
Possibility of configuring three levels of savings
- ✓ **Intelligent Consumption:** automatic adjustment of water and soap consumptions (standard)
- ✓ **Optimal loading**
- ✓ **Prepared to be connected to water recovery tanks ECOTANK**
- ✓ **Low water consumption**  
Less than 10 liters of water per kg and cycle (standard washing cycle 60°C)
- ✓ **High G FACTOR**  
Reduced residual moisture.  
Reduced drying time.
- ✓ **Options:**
  - Automatic weighing system on feet



## MAINTENANCE

- ✓ **Electric components on the left side, mechanic components on the right side and connections on the top**  
Easy access to all the components.  
Easier to connect, all connections protected from water and detergents.
- ✓ **Central drain** Easy installation
- ✓ **Technical menu**  
Statistics, alarms, autotest, data recovery for technicians and maintenance
- ✓ **Options:**
  - Side drain
  - Low steam pressure: to enable installation of steam heated washer with very low pressure of steam on site





## Programmable microprocessor TOUCH II

The new TOUCH II is a substantial evolution on the previous microprocessor which includes many more features mainly based on achieving more efficiency, versatility and connectivity among others.



## OUTSTANDING FEATURES

### Microprocessor TOUCH II

4'3" touchscreen (ASM models), 7" touchscreen (DHB and Pullman).  
Totally programmable and user-friendly.

Configuration of washing and spinning speed.  
Complete regulation of water levels  
Regulable washing temperature from 20°C to 90°C.  
Standard WET CLEANING system.

### 37 languages

Available and easy to configure, thanks to DOMUS aim to be accessible to everyone.



### Wet Cleaning, traceability as standard

Equipped with all features to use wet cleaning programs (useful in nursing homes)  
Adjustable washing speeds and temperatures  
Fully regulation of water levels  
8 dosing signals as standard + 6 extra as option

### Screen on both sides of the machine

Standard on DHB and Pullman.  
Touch operated on the dirty side and only displaying status of program on the clean side (option in ASM models).

### USB Connection

PC software (Wash Control) free of charge for programming, traceability, data analysis...



### Outer casing in skinplate

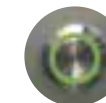
and top panel in stainless steel, easy to clean. As option, AISI 304 stainless steel outer casing

### 3 water inlets

standard in DHB and Pullman (third inlet as option in ASM models)

### Automatic positioning of drum

Standard, with motor brake to make loading and unloading operations (as option in ASM models)



### Other options

Detergent box kit (instead of pumps)  
Dual heating electric - steam: energy savings  
2nd drain valve for water recovery  
Titration valve

# EFFICIENCY

DOMUS new ranges of barrier washers have focused on water, energy and chemical savings, as well as top performance as main priority

**High G-Factor reduces residual moisture and drying time**



## Water savings

Possibility to choose from three levels of savings (standard)



## Optimal loading

Manual indication of the loading weight (standard feature)

## Automatic weighing system on feet

as option (not available on ASA-100)



# ECOTANK

## Prepared to be connected to water recovery tanks

Domus barrier washer extractors, with Touch II and the double drain, can be connected to the new ECOTANK, which allows the water recovery, achieving important water and energy savings

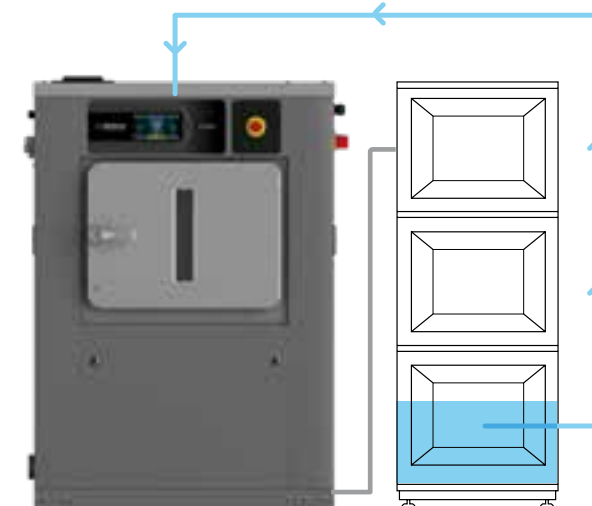


## WIDE RANGE

Models of 1, 2 or 3 tanks

Different volumes of 80 or 150 L

## WATER SAVING





# ERGONOMICS

As health and safety at work had become an important issue, our equipment is designed to be the most comfortable for the user.

## Huge door opening

making the loading and unloading operations easier, biggest opening in the market.

- Huge doors
- DHB 27** 542 x 650 mm
- DHB 35/50** 700 x 650 mm
- DHB 70** 1402 x 650 mm
- ASA-100** 960x700 mm

850 mm



## Ergonomic height of loading

## Plinths to align loading height

(door base at 850 mm)

## User friendly drum opening by push button



# CONNECTIVITY

One thing that is a must nowadays is to stay **CONNECTED**. DomusConnect is the new IoT solution: a cloud based platform which allows many possibilities.

THE INTERNET OF THINGS

## DOMUSCONNECT



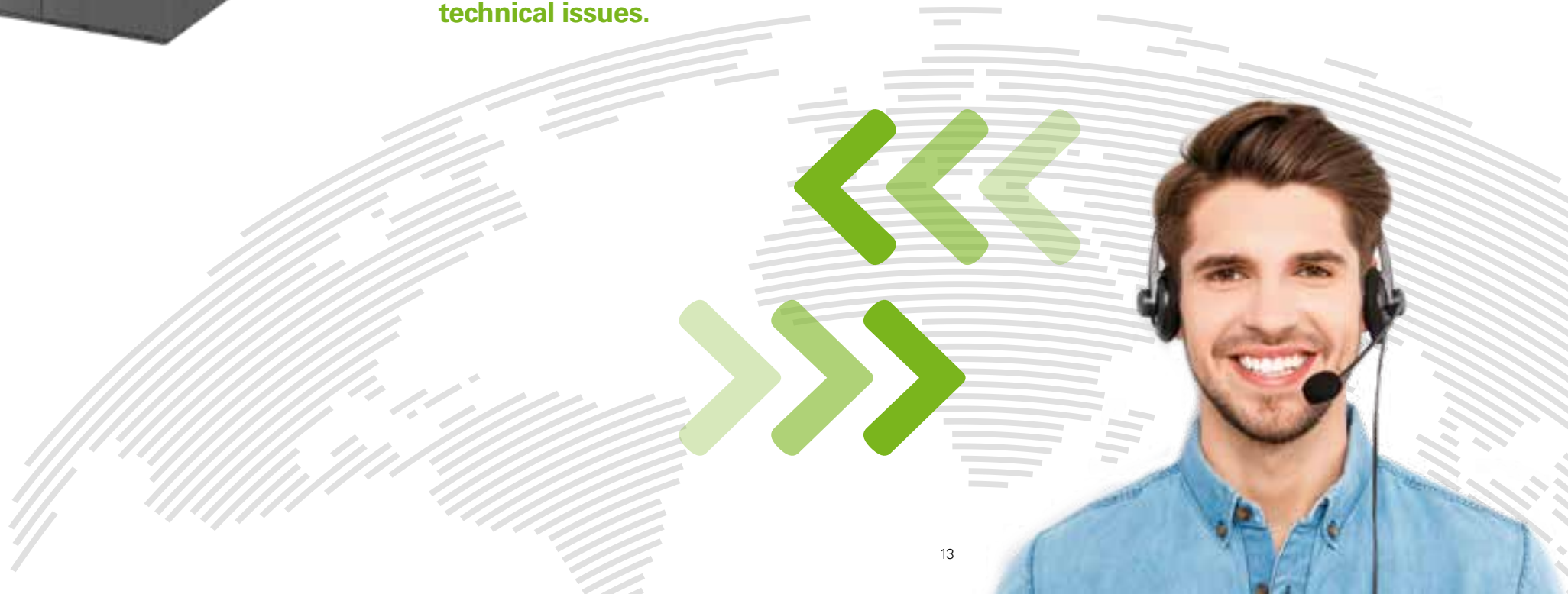
### Remote technical service

Machine monitoring, machine error warning, management for traceability and statistics. Remote desk and data recovery for technicians and maintenance, software update, etc.

### Management of laundries

Our DOMUS IoT solution allows you to monitor and manage your laundry business.

**Bidirectional communication with the machine to offer a quicker and closer service, to update software or to solve technical issues.**







# MAINTENANCE

One of DOMUS concerns is to make life easier for our clients. That includes offering quality equipment and parts of reputed brands, which demand little maintenance.

## Easy access to components

Electric components on the left side, mechanic components on the right side, connections on the top. Easy access to all the components. Easier to connect, all connections protected from water and detergents.

## Technical menu

Statistics, alarms, autotest, data recovery for technicians and maintenance.

## Central drain

Easy installation.

## Other options

Side drain.  
Low steam pressure: to enable installation of steam heated washer with very low pressure of steam on site.



## Technical data

		MEDICAL RANGE						
	UNIT.	ASM-16	ASM-22	DHB-27	DHB-35	DHB-50	DHB-70	ASA-100
<b>DRUM</b>								
Load capacity 1:9	Kg	18	25	30	39	54	78	100
Load capacity 1:10	Kg	16	22	27	35	49	70	90
Volume	l	158	220	266	347	489	694	900
Diameter	mm	633	633	800	800	800	800	1050
Depth	mm	500	700	530	690	974	1380	1032
Drum compartments		1	1	1	1	1	2	2
<b>GENERAL DETAILS</b>								
Washing speed	r.p.m.	45	45	45	45	45	45	45
Spining speed	r.p.m.	1000	1000	920	920	920	920	750
G Factor		350	350	375	375	375	375	325
Double drain		OPC	OPC	OPC	OPC	OPC	OPC	STANDARD
TOUCH II Screen		4,3"	4,3"	7"	7"	7"	7"	7"
Double display		OPT	OPT	STD	STD	STD	STD	STD
Electric brake		OPT	OPT	STD	STD	STD	STD	STD
Plinth of height		OPT	OPT	OPT	OPT	OPT	OPT	N/A
3 water inlets		OPT	OPT	STD	STD	STD	STD	STD
<b>DOOR</b>								
Drum opening dimensions	mm	400x315	400x315	480x515	640x515	640x515	2x(640x515)	900x500
Vat opening dimensions	mm	455x415	455x415	542x650	700x650	700x650	1402x650	960x700
Height base door	mm	670	670	800	800	800	800	960
<b>POWER</b>								
Motor (kW)	kW	2,2	2,2	4	4	5,5	7,5	15
Heating (kW) (Electric / dual model)	kW	12	18	18	27	36	45	60
Max. power (kW) (Electric model)	kW	14,2	20,2	22	31	41,5	52,5	75
Max. power (kW) (Steam model)	kW	2,2	2,2	4	4	5,5	7,5	15
<b>CONNECTIONS</b>								
Water inlet	inch	3/4"	3/4"	3/4"	3/4"	1"	1"	1"
Steam inlet	inch	3/4"	3/4"	3/4"	3/4"	3/4"	3/4"	3/4"
Drain (mm)	inch	3"	3"	3"	3"	3"	3"	3"
Compressed air inlet	mm	N/A	N/A	N/A	N/A	N/A	N/A	8
<b>DIMENSIONS</b>								
Width (mm)	mm	984	1184	1201	1359	1654	2061	1677
Depth (mm)	mm	914	914	1098	1098	1098	1098	1344
Height (mm)	mm	1398	1398	1580	1580	1580	1580	1960
Net weight (Kg)	Kg	438	471	886	926	1063	1190	1900
<b>PACKING DIMENSIONS</b>								
Width (mm)	mm	1072	1262	1464	1608	1903	2310	1900
Depth (mm)	mm	1102	1102	1300	1300	1300	1300	1500
Height (mm)	mm	1530	1530	1720	1720	1720	1720	2230
Gross weight (Kg)	Kg	459	494	906	946	1085	1220	1958
Volume (m³)	m³	1,81	2,13	3,27	3,60	4,26	5,17	6,36

\*DOMUS reserves the right to modify the technical data without notice.





Utilaje Alimentare Profesionale  
Bdul Biruintei, nr. 49 / 077145  
Judetul Ilfov Oras Pantelimon  
ROMANIA  
Tel. +40 021 350 20 34

